

| | |
|---|--|
|  | <div>STAFF</div> <div>REPORT</div> |
| Date: | January 20, 2026 |
| Prepared By: | Matt Denton and Smithville Lake Fest Committee |
| Subject: | 2026 Smithville Lake Fest and Carnival |

The purpose of this memo is to outline the timeline and associated road and parking lot closures for the 2026 Smithville Lake Fest and Carnival event, scheduled for June 18–20. This information is provided to ensure awareness and coordination as preparations begin for this annual community event.

Event Timeline and Closures

Saturday, June 13

- Meadow Street parking lots will close at 10:00 PM in preparation for carnival load-in.

Sunday, June 14

- Carnival rides and equipment arrive and begin unloading.
- Meadow Street will be barricaded beginning Sunday, June 14, and will remain closed through Sunday, June 21.

Monday–Wednesday, June 15–17

- The carnival company will set up all rides, booths, and associated features.

Thursday, June 18

- Carnival setup completed.
- Carnival opens at 6:00 PM (carnival operations only).
- Little Miss Smithville Pageant will start at the Courtyard stage.
- Full Smithville Lake Fest event road closures take effect at 10:00 PM.

Friday, June 19

- Smithville Lake Fest will begin setting up vendors and associated features
- Smithville Lake Fest officially begins at 5:00 PM.
- Carnival opens at 6:00 PM.

Saturday, June 20

- Lake Fest Parade begins at 10:30 AM.
- Smithville Lake Fest Staff will close parade route roads before the parade starts
- Carnival and Lake Fest activities open at 11:30 AM.

Sunday, June 21

- Event concludes.
- Carnival load-out and site cleanup occur throughout the day.

Event Staff will continue coordinating with Parks and Recreation, Public Works, Emergency Services, and other departments to ensure safe traffic control, access for emergency services, and timely reopening of roads and parking areas following the event.

Please let me know if you have any questions or need additional details.

Event Map, Road Closures/Detours and Parking Maps:

Attached to this memo are three maps. Event Map, Road Closures and Detours. The Smithville Lake Fest Committee will be presenting these to the Board, explaining these in more detail, and answering any questions the Boards may have.

LAKE FEST EVENT MAP



EVENT PARKING



RESTROOMS (4 total)



Police and Emergency Entrance



BEER SALES



FOOD TRUCK

1

SENIOR CENTER

2

CORNERSTONE COFFEE

3

CHOPS BBQ

4

GIZMOS



JUNE 14 (SUNDAY) - ARRIVE AND UNLOAD RIDES AND CARNIVAL (BARICADE W. MEADOW ST. THROUGH SUNDAY 21ST) - MEADOW LOTS CLOSED AT 10:00 PM SATURDAY, JUNE 13
JUNE 15-17 - (MONDAY THROUGH WEDNESDAY) - SET UP ALL CARNIVAL FEATURES
JUNE 18 (THURSDAY) - FINISH CARNIVAL SET UP - CARNIVAL STARTS AT 6:00 PM (CARNIVAL ONLY) - FULL ROADS CLOSURE WILL HAPPEN AT 10:00 PM
JUNE 19 (FRIDAY) - LAKE FEST STARTS AT 5:00 PM - CARNIVAL STARTS AT 6:00 PM
JUNE 20 (SATURDAY) - PARADE 10:30 AM START - CARNIVAL AND LAKE FEST 11:30 AM START
JUNE 21 (SUNDAY) - LEAVE THAT DAY AFTER THE CLEAN UP

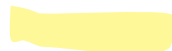
ROAD CLOSURES - LAKE FEST EVENT MAP



EVENT PARKING



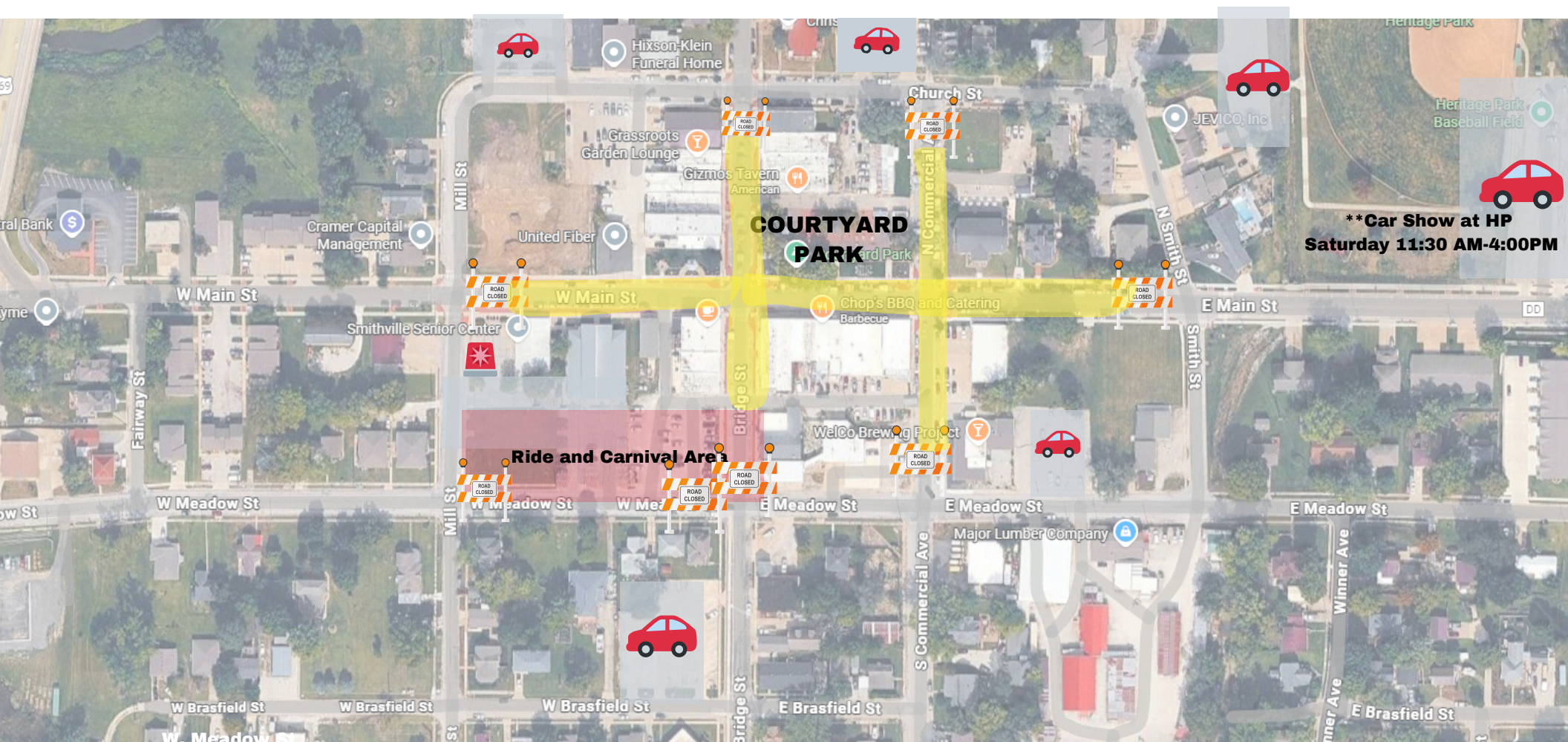
ROAD CLOSE SIGNS



EVENT AREA



POLICE PARKING



****Car Show at HP
Saturday 11:30 AM-4:00PM**

JUNE 14 (SUNDAY) - ARRIVE AND UNLOAD RIDES AND CARNIVAL (BARICADE W. MEADOW ST. THROUGH SUNDAY 21ST) - MEADOW LOTS CLOSED AT 10:00 PM SATURDAY, JUNE 13
JUNE 15-17 - (MONDAY THROUGH WEDNESDAY) - SET UP ALL CARNIVAL FEATURES
JUNE 18 (THURSDAY) - FINISH CARNIVAL SET UP - CARNIVAL STARTS AT 6:00 PM (CARNIVAL ONLY) - FULL ROADS CLOSURE WILL HAPPEN AT 10:00 PM
JUNE 19 (FRIDAY) - LAKE FEST STARTS AT 5:00 PM - CARNIVAL STARTS AT 6:00 PM
JUNE 20 (SATURDAY) - PARADE 10:30 AM START - CARNIVAL AND LAKE FEST 11:30 AM START
JUNE 21 (SUNDAY) - LEAVE THAT DAY AFTER THE CLEAN UP

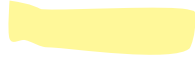
DETOUR LAKE FEST EVENT MAP



EVENT PARKING



DETOUR EVENT



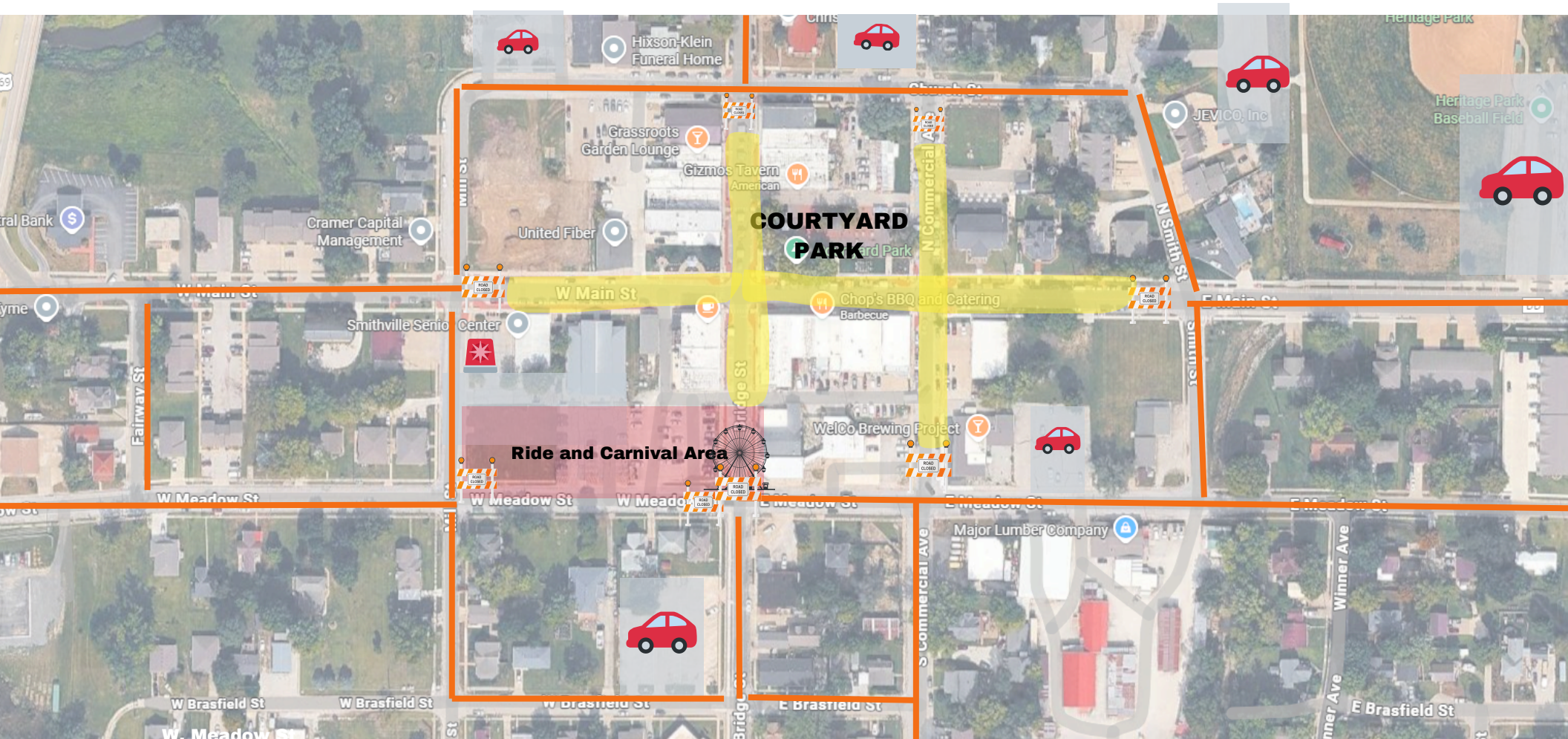
EVENT AREA



ROAD CLOSE SIGNS



POLICE PARKING



JUNE 14 (SUNDAY) - ARRIVE AND UNLOAD RIDES AND CARNIVAL (BARICADE W. MEADOW ST. THROUGH SUNDAY 21ST) - MEADOW LOTS CLOSED AT 10:00 PM SATURDAY, JUNE 13
JUNE 15-17 - (MONDAY THROUGH WEDNESDAY) - SET UP ALL CARNIVAL FEATURES
JUNE 18 (THURSDAY) - FINISH CARNIVAL SET UP - CARNIVAL STARTS AT 6:00 PM (CARNIVAL ONLY) - FULL ROADS CLOSURE WILL HAPPEN AT 10:00 PM
JUNE 19 (FRIDAY) - LAKE FEST STARTS AT 5:00 PM - CARNIVAL STARTS AT 6:00 PM
JUNE 20 (SATURDAY) - PARADE 10:30 AM START - CARNIVAL AND LAKE FEST 11:30 AM START
JUNE 21 (SUNDAY) - LEAVE THAT DAY AFTER THE CLEAN UP